

Item
15-219

High Performance Dish Antenna, 4.9 - 5.8GHz, 32 dBi

Features:

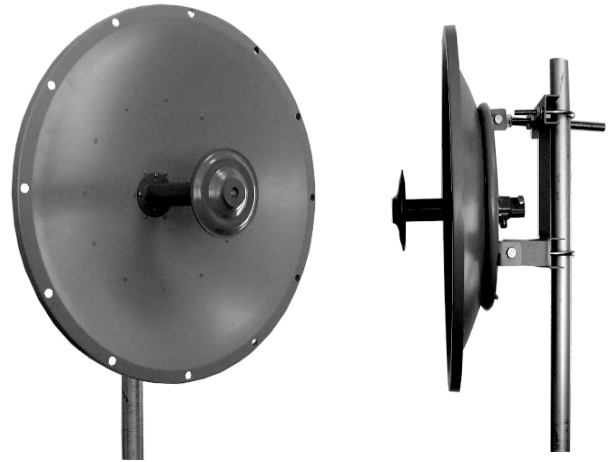
- Wide Band Operation
- Vertically or Horizontally Polarized
- Extremely Rugged for Extreme Environments

Electrical Specification

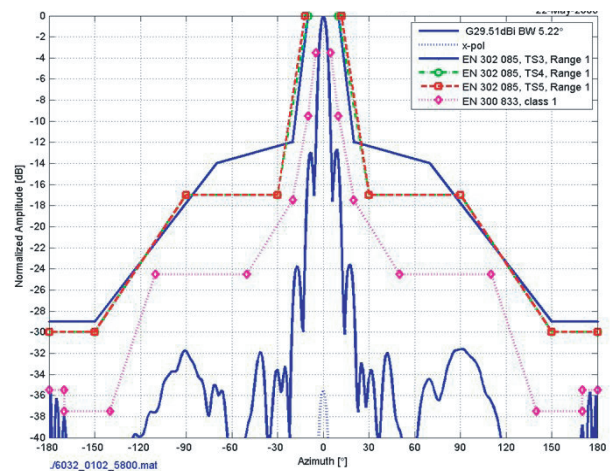
Frequency Range:	4940 - 5850 MHz
Gain:	32 dBi
Beamwidth:	4°
VSWR:	1.5:1
Impedance:	50 Ohms
Input Power:	100 W
Mechanical Downtilt:	30°
Sidelobes:	-32 dB
Front to Back Ratio:	-38 dB
Cross Pole:	-34 dB

Mechanical Specification

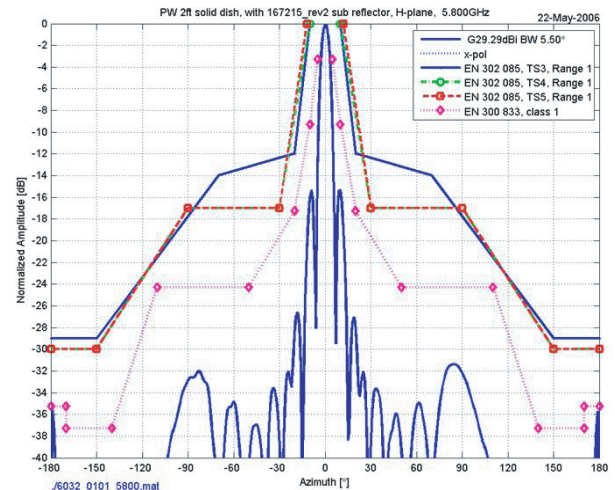
Size/Diameter:	36.5 in (927mm)
Weight, incl. bracket	22 lb (10kg)
Wind Loading:	125 Mph
Operating Temperature:	-40°C to 70°C
Mounting Kit/Style:	Included: Pole Mount
Additional Features:	Broadband Antenna



5.8GHz E-Plane



5.8GHz H-Plane



TELETRONICS
INTERNATIONAL INC.

*Specifications Subject to Change without Notice

www.teletronics.com

All Rights Reserved. Copyright 2006 Teletronics International, Inc.
2 Choke Cherry Road, Rockville, MD 20850 Tel: 301.309.8500 Fax: 301.309.8851