

**Item
15-561**

Dish Antenna, 5.8GHz, 28dBi

Electrical Specification

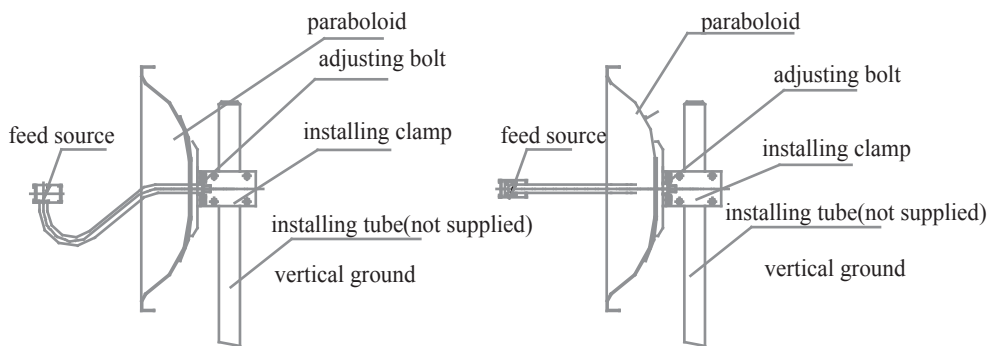
Frequency Range:	5725 - 5850 MHz
Gain:	28 dBi
Horizontal Beamwidth:	6°
Vertical Beamwidth:	6°
Front/Back Ratio:	≥36dB
Polarization:	Linear
VSWR:	≤1.4
Impedance:	50 Ohms
Max. Input Power:	100W
Connector:	N Type Female
Lightning Protection:	DC Ground



Mechanical Specification

Diameter:	624mm (24.5")
Weight, incl. bracket	7.7 lbs
Wind Survivability:	210km/h
Operating Temperature:	-40°C to 60°C
Mounting Kit/Style:	Included: Pole & Wall Mount

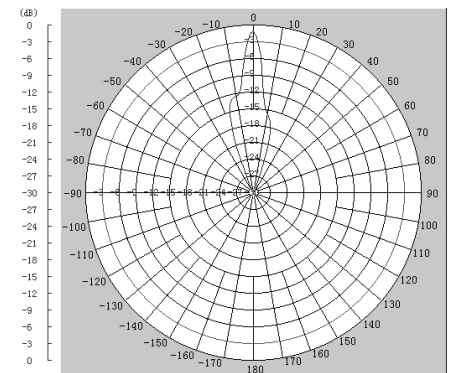
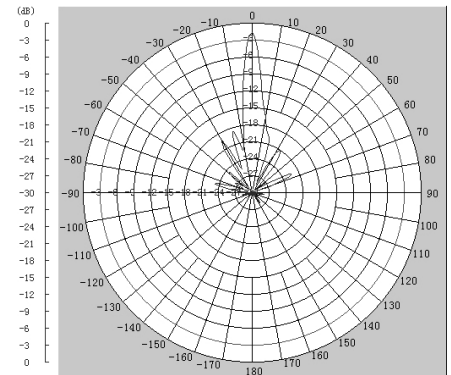
Installation Diagram



(figure a) vertical installtion

(figure b) horizontal installtion

Antenna Radiation Pattern



TELETRONICS
INTERNATIONAL INC.

***Specifications Subject to Change without Notice**

Teletronics International, Inc.
2 Choke Cherry Road
Rockville, MD 20850

Tel: 301.309.8500
Fax: 301.309.8851
www.teletronics.com