

Warranty Policy

Limited Warranty

All Teletronics' products warranted to the original purchaser to be free from defects in materials and workmanship under normal installation, use, and service for a period of one (1) year from the date of purchase. Under this warranty, Teletronics International, Inc. shall repair or replace (at its option), during the warranty period, any part that proves to be defective in material of workmanship under normal installation, use and service, provided the product is returned to Teletronics International, Inc., or to one of its distributors with transportation charges prepaid. Returned products must include a copy of the purchase receipt. In the absence of a purchase receipt, the warranty period shall be one (1) year from the date of manufacture.

This warranty shall be voided if the product is damaged as a result of defacement, misuse, abuse, neglect, accident, destruction or alteration of the serial number, improper electrical voltages or currents, repair, alteration or maintenance by any person or party other than a Teletronics International, Inc. employee or authorized service facility, or any use in violation of instructions furnished by Teletronics International, Inc.

This warranty is also rendered invalid if this product is removed from the country in which it was purchased, if it is used in a country in which it is not registered for use, or if it is used in a country for which it was not designed. Due to variations in communications laws, this product may be illegal for use in some countries. Teletronics International, Inc. assumes no responsibility for damages or penalties incurred resulting from the use of this product in a manner or location other than that for which it is intended.

IN NO EVENT SHALL TELETRONICS INTERNATIONAL, INC. BE LIABLE FOR ANY SPECIAL, INCIDENTAL OR CONSEQUENTIAL DAMAGES FOR BREACH OF THIS OR ANY OTHER WARRANTY, EXPRESSED OR IMPLIED, WHATSOEVER.

Some states do not allow the exclusion or limitation of special, incidental or consequential damages, so the above exclusion or limitation may not apply to you. This warranty gives you specific legal rights, and you may also have other rights that vary from state to state.

RMA Policy

Product Return Policy

It is important to us that all Teletronics' products are bought with full confidence. If you are not 100% satisfied with any product purchased from Teletronics you may receive a prompt replacement or refund, subject to the terms and conditions outlined below.

IMPORTANT: Before returning any item for credit or under warranty repair, you must obtain a Return Merchandise Authorization (RMA) number by filling out the RMA form. Products will not be accepted without an RMA number. All products being shipped to Teletronics for repair/refund/exchange must be freight prepaid (customer pays for shipping). For all under warranty repair/replacement, Teletronics standard warranty applies.

30-Day full refund or credit policy:

- I. Product was purchased from Teletronics no more than 30 day prior to the return request.
- II. All shipping charges associated with returned items are non-refundable.
- III. Products are returned in their original condition along with any associated packaging, accessories, mounting hardware and manuals. Any discrepancy could result in a delay or partial forfeiture of your credit.

Unfortunately Teletronics cannot issue credits for:

- I. Products not purchased from Teletronics directly. If you purchased from a reseller or distributor you must contact them directly for return instructions.
- II. Damaged items as a result of misuse, neglect, or improper environmental conditions.
- III. Products purchased direct from Teletronics more than 30 days prior to a product return request.

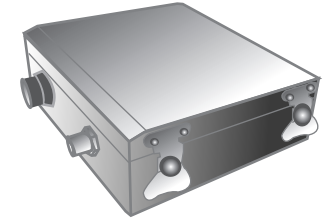
To return any product under 1 year warranty for repair/replacement, follow the RMA procedure.



TELETRONICS
INTERNATIONAL INC.

VERSA 5800 Wireless Router Kit

Product Name: CPE
Model: VERSA5800 Wireless Router
Item Number: 11-116
**(Contains 11-131 30mW Wireless Card,
17-104 CAT5 Power Extractor, 13-505 5800HM UDC)**



Quick Product Guide

Technical Specs

Protocol: IEEE 802.11b
Frequency: 5725 ~ 5850 MHz
Protocol: IEEE 802.11b
Spreading: DSSS (Direct Sequence Spread Spectrum)
Transmit: 500mW (27 dBm)
Noise Figure: 4.0 dB Max

Processor: AMD SC520 133 MHz
Memory: 64 MB SDRAM
Compact Flash Card: 64 MB Compact Flash Card
Operating System: Linux 2.4.13 Kernel with AC7 patch
Web Management: Configuration, monitoring, information
PCMCIA Slot: Single PCMCIA slot
Ethernet Adapter: Realtek 8139C or NSC DP83815 10/100 HD
Frequency Stability: 2.5 ppm
Serial Port: 9 Pins, Male RS-232
RF Connector: N-Female
Power Consumption: Board: 75mA ; Board + PCMCIA: 175mA
Safety Voltage Range: 18 VDC - 48 VDC
AC Power Adapter:
18V: Input 120 VAC - 60 Hz; Output 18 VDC - 1.2A
24V: Input 120 VAC - 60 Hz; Output 24 VDC -- 1A
48V: Input 120 VAC - 60 Hz; Output 48 VDC -- .5A

DC Injector: Combine Power and Data Through an RJ-45 Cable
Cables: 3' Straight RJ-45 (Blue) , 1' Cross Over RJ-45 (Gray)
RF Adapter Cable type N Male or N Female
LED Indicators: LED position Image (For Second Generation Only)

Firmware: V. 2.21.3, 2.52.3, 3.02.4 or Higher
RED: Error; OFF: OK; ON Fixed: Bios Error; On Blink:
Firmware loading or Upgrading

Firmware: V. 2.2x ; 3.02.x or Higher
GREEN 1: Power; ON: OK; OFF: No power

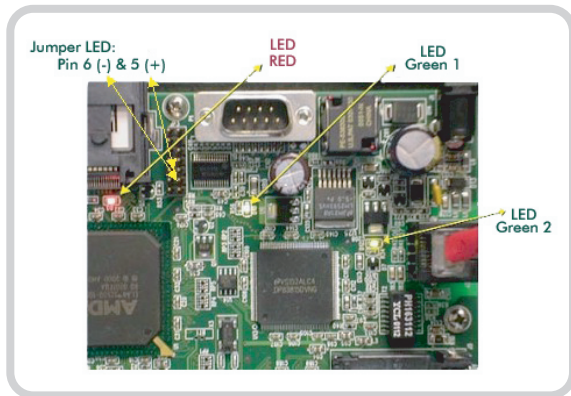
Firmware: V. 2.2x ; 3.02.x or Higher
GREEN 2: LAN; ON: Link; Blink: Data; OFF: No Link

Firmware: V. 2.6x ; 3.02.5 or Higher
Jumper LED: Wireless Link; (Optional LED Needed: Max. 6 mA);
ON = Link; Blink = No Link; OFF = Option not available

Package List

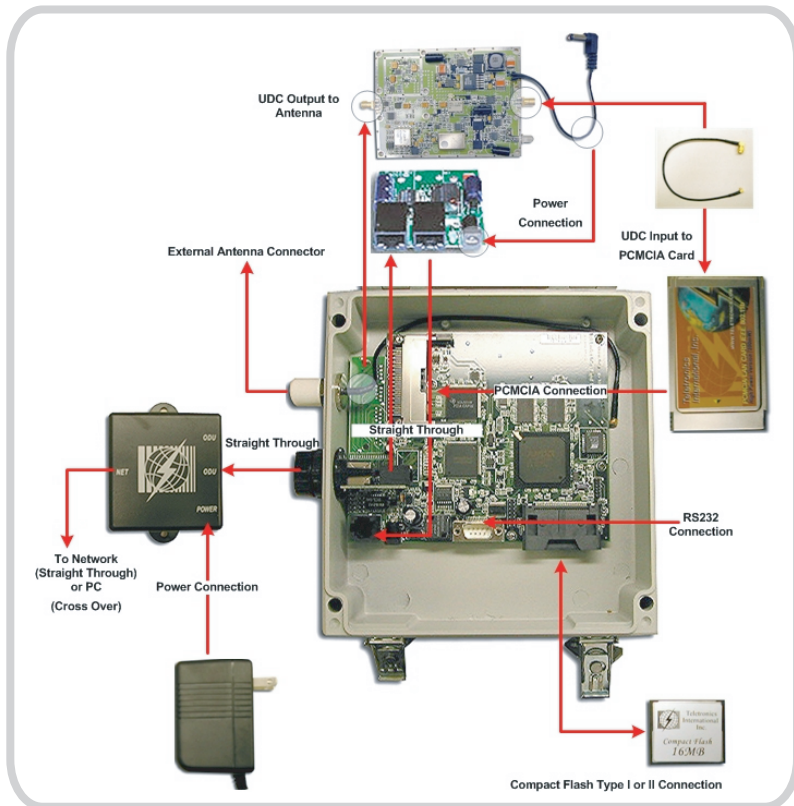
1. 1. CPE NEMA4 Box.
2. PC Board with AMD-133 MHz Processor.
3. Pigtail for 2M or 11Mbps Wireless PCMCIA card to UDC module.
4. RJ 45 Straight (Blue), Crossover (Gray) and DB9 Female to DB9 Female Null Modem Cables.
5. Compact Flash Card 64MB (with latest Smart Cell software version).
6. AC Adaptor for 18V, 24V or 48V.
7. DC-Injector, to combine data and power through RJ45.
8. U Bolt Mounting.
9. 30mW PCMCIA card.
10. UDC 5800HM
11. Product Guide.

Assembly Instruction



Enclosure: Waterproof
 Ethernet Gland: Designed for Outdoor
 Ethernet Cable
 Dimensions (PCB): 6.4" x 5.2" x 0.7"
 Dimensions with mounting:
 8.5" L x 12" W x 3" H
 (21.6cm L x 30.5cm W x 7.6cm H)
 Operating Temperature: -10 ~ 60° C
 (14~140° F)
 Humidity (non condensing): 5 ~ 80%
 Weight: 7 lb.

*Part pictures will vary, please use it only for general guide line.



PLEASE VISIT OUR WEBSITE AT WWW.TELETRONICS.COM FOR MORE INFORMATION

Quick Setup Guide

I. Initial Setup

Requirements

- One or more PCs (desktop or notebook) with Ethernet interface.
- TCP/IP protocol must be installed on all PCs. (Refer to User Manual for additional information)
- Network cables. Use standard 10/100BaseT network (UTP) cables with RJ45 connectors.
- All wireless devices must be compliant with the IEEE 802.11B specifications.
- Microsoft Internet Explorer 5.0 or later or Netscape Navigator 4.7 or later.

** To avoid damage to the EZ Bridge, do not connect the power adapter to a power source until all other connections has been established.*

II. Unit login info

After all initial setup requirements are checked type the following IP under the address bar of a web browser to login.

VERSA Router Default IPs

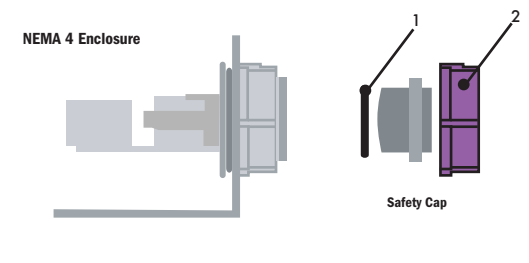
Address = <https://192.168.1.1>
 Authentication
 User Name: admin
 Password: 1234

Default Factory Settings

Ethernet interface IP: 192.168.1.1
 WLAN interface IP: 192.168.2.1
 Wireless Mode: Access Point and ESSID: DEFAULT

Note: For a back-to-back connection between the CPE unit and any Network Interface Card using a crossover cable, please use 10M or 100M Half Duplex fix speed rate. Some cards do not Auto Sense or Auto Negotiates properly with the NIC card in the unit.

Waterproof RJ-45 Connector Assembly



Re-using items (1) and (2) from the safety cap, assemble the waterproof RJ-45 connector as shown below:

