



EZP-F EZPlatform® – Fiber AP/Hotspot/Repeater activated by Fiber

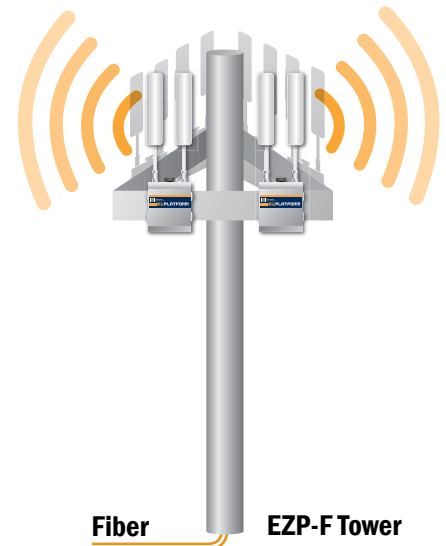
Teletronics' EZPlatform® AP/Hotspot/Repeater is designed for high-power access point, hotspot and repeater applications. A powerful end-to-end system for a wireless Internet network can be built by integrating the EZPlatform® with Teletronics TT™ subscriber units and other radios. The simplicity of use of the EZPlatform® allows operators to quickly bring service to their customers, and with its two serial ports and two Ethernet ports the unit can easily incorporate GPS, GPRS, RFID, VoIP, surveillance cameras, field meters, motion sensors and data networks for multiple industrial and commercial applications. The EZPlatform® is available in single or dual radio configuration, with 1 W (2.4 GHz) and 600 mW (2.4/5.8 GHz) radio card options.



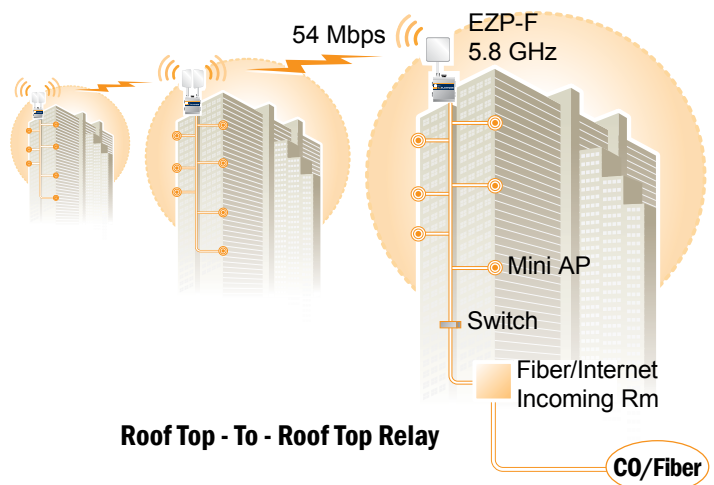
item #: 11-310

Product model	Optical wavelength (nm)	Transmitting optical power (dBm)	Receiving sensitivity (dBm)	Saturability (dBm)
Single Fiber SM 25 Km	1310/1550, 1550/1310	-6 - 10	-23	≥ -3
Dual Fiber/MM 2km	1310	-10 ~ -4	-17	≥ -3
Dual Fiber/SM 25km	1310	-10 ~ -6	-23	≥ -3

Ethernet	IEEE 802.3 10BASE-T/100BASE-TX with autonegotiation
Networking	Bridging mode, NAT gateway, static routing, RIPv2 dynamic routing. DHCP client, DHCP server. Static/dynamic VLAN, IEEE 802.1Q, management VLAN, SSID-based tagging. PPPoE, DDNS, STP, QoS (802.11e and WMM), IPv6
Wireless	802.11a/b/g (2.4/5.8 GHz, 700/900 MHz), turbo mode. Four SSIDs per interface, AP/client mode, ad hoc, WDS, roaming. WEP, WPA, WPA2 encryption with hex/ASCII keys. Adjustable RF TX power and data rate. Hotspot: WiFiDog/RADIUS authentication, local/remote captive portal
Management	HTTP/HTTPS web configuration interface, TELNET. SNMPv2, remote syslog, local event log. Bandwidth control with default and host-specific upload/download rates. Configuration backup and restore, web-based firmware upgrade. Serial port rescue console, EZManager support
Security	IP address, MAC address and SSID filtering Firewall, intra-BSS traffic blocking, wireless-wired matching. 802.1X
Boot loader	RedBoot
Operating System	Linux, 2.6.x kernel

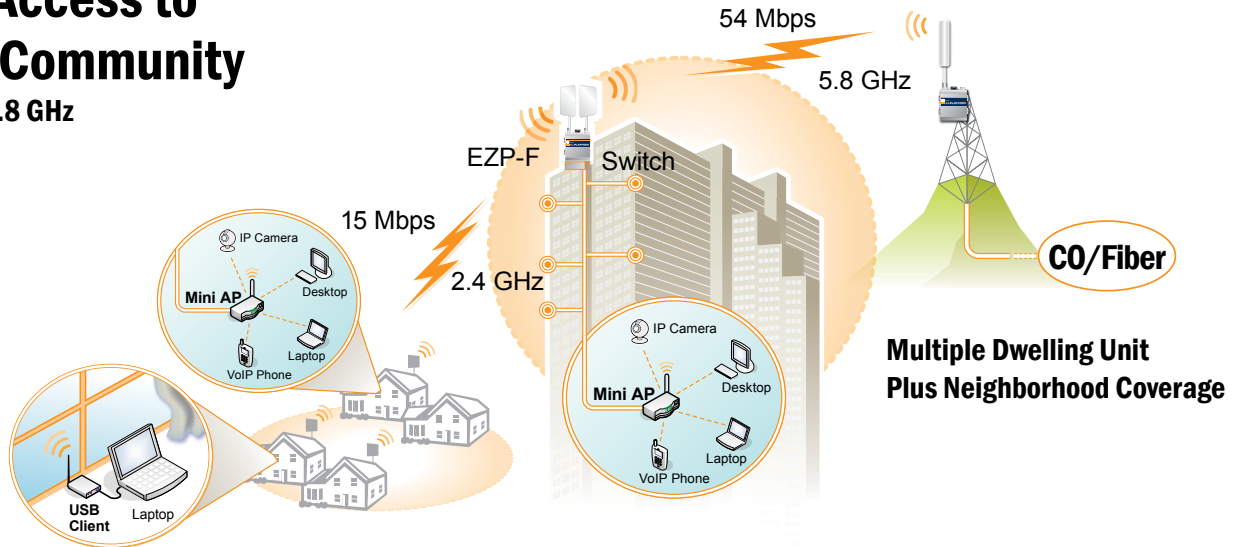


CPU	Intel IXP425 network processor, 533 MHz
Memory	64 MB SDRAM
Storage	16 MB flash
Ethernet interface	Two 10BASE-T/100BASE-TX ports
Serial interface	Two RS-232 ports
Wireless interface	Two Mini PCI Type III slots
LED indicators	Power, WLAN1 status, WLAN2 status
Power	10-48 V DC PoE (Power over Ethernet)
Power consumption	25 W, maximum
Dimensions	8 x 7.5 x 2.5 in
Weight	7 lb
Operating temperature	-20 °C to +70 °C, non-condensing
Enclosure	NEMA 4, ruggedized and weatherproof
Mounting	Wall mount, pole mount



Remote Access to Isolated Community

– EZP-F® 2.4/5.8 GHz



WiFi Hot Spot

