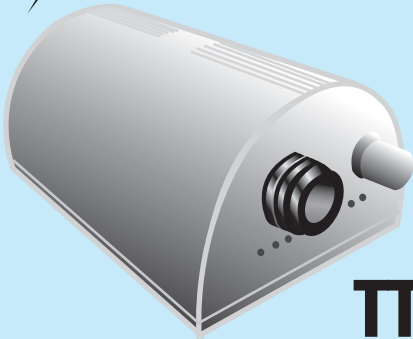




Introducing Teletronics' TT™ X Series



TT™ 2400X

High Power 250mW 802.11b/g Gateway

Item# 11-183 (AP Gateway)
Item# 11-184 (SU Gateway)
FCC ID: MFMTT-2400



Features

- Web & SNMP based Management EZManager
- Adjustable Transmit (TX) Power
- Intra-BSS Traffic Blocking (Layer 2 Isolation)
- Configurable ACK timeout for long distance
- Turbo-mode for high data rate (108 Mbps)
- Ruggedized waterproof, all weather enclosure
- WDS available in AP Mode
- Powerful QoS for Real Time Applications
- Dynamic Bandwidth Control Management

Receive Sensitivity:

IEEE 802.11g	IEEE 802.11b
54Mbps: ≤ -72dBm	11Mbps: ≤ -88dBm
48Mbps: ≤ -73dBm	5.5Mbps: ≤ -90dBm
36Mbps: ≤ -77dBm	2Mbps: ≤ -92dBm
24Mbps: ≤ -81dBm	1Mbps: ≤ -95dBm
18Mbps: ≤ -84dBm	
12Mbps: ≤ -86dBm	
9Mbps: ≤ -88dBm	
6Mbps: ≤ -89dBm	
11Mbps: ≤ -88dBm	
5.5Mbps: ≤ -90dBm	
2Mbps: ≤ -92dBm	
1Mbps: ≤ -95dBm	

Specifications

Standard Compliance:

IEEE 802.11b/g (54Mbps)

Modulation:

OFDM w/BPSK, QPSK, 16 QAM,
64 QAM Modulation

Frequency Band:

2.4GHz IEEE
802.11b/g ISM Band

Data Rate:

54, 48, 36, 24, 18, 12, 11, 9, 6,
5.5, and 1 Mbps

Output Power:

IEEE 802.11b: 22dBm (+/- 3dB)
@ 1/2/5.5/11Mbps, IEEE 802.11g:
21dBm (+/- 3dB) @ 54 Mbps
22dBm (+/- 3dB) @ 48 Mbps
22dBm (+/- 3dB) @ 36 Mbps
22dBm (+/- 3dB) @ 6 Mbps

Mounting:

For both wall and pole mount

Enclosure:

Powder Coated Cast Aluminum

Connector:

N-Type Female

Management:

Web and SNMP based Management
EZManager

RF Channels:

Total of 3 Non-Overlapping Channels

Data Security:

WPA, WPA2 & 64/128 bit WEP
Data Security, MAC Address Filter,
Intra-BSS Traffic Blocking
(Layer 2 Isolation)

Ethernet Connection:

10/100 Base T
Auto MDI/MDX

DC Power Input:

Includes 48VDC Adapter & PoE
Injector with surge protection
IEEE 802.3af compliant

Operating Temperature:

-40 °C to + 70 °C

Weight:

5.5 lbs

TT™2400X Special Features:

WAN:

- Static IP/DHCP Client/PPPoE Client
- MAC Cloning
- WAN Ping Inbound Filter

LAN:

- RIP Support
- DNS Relay
- DHCP Server including IP-MAC Reservation

WIRELESS:

- SSID Hiding
- WEP/WPA/WPA2 Enterprise
- MAC Filtering
- WDS
- 802.11d
- RTS/Fragmentation Threshold
- Ack Timeout
- Transmit Power
- Auto Channel Select

GATEWAY:

- NAT
- UPNP NAT Passthrough
- Firewall/DMZ (Demilitarized Zone)
- QoS (Bandwidth Control)

MANAGEMENT:

- Syslog
- Ping Watchdog
- Firmware Upgradeable
- Configuration Import/Export
- EZ Manager