

## Warranty Policy

### Limited Warranty

All Teletronics' products warranted to the original purchaser to be free from defects in materials and workmanship under normal installation, use, and service for a period of one (1) year from the date of purchase. Under this warranty, Teletronics International, Inc. shall repair or replace (at its option), during the warranty period, any part that proves to be defective in material of workmanship under normal installation, use and service, provided the product is returned to Teletronics International, Inc., or to one of its distributors with transportation charges prepaid. Returned products must include a copy of the purchase receipt. In the absence of a purchase receipt, the warranty period shall be one (1) year from the date of manufacture.

This warranty shall be voided if the product is damaged as a result of defacement, misuse, abuse, neglect, accident, destruction or alteration of the serial number, improper electrical voltages or currents, repair, alteration or maintenance by any person or party other than a Teletronics International, Inc. employee or authorized service facility, or any use in violation of instructions furnished by Teletronics International, Inc.

This warranty is also rendered invalid if this product is removed from the country in which it was purchased, if it is used in a country in which it is not registered for use, or if it is used in a country for which it was not designed. Due to variations in communications laws, this product may be illegal for use in some countries. Teletronics International, Inc. assumes no responsibility for damages or penalties incurred resulting from the use of this product in a manner or location other than that for which it is intended.

IN NO EVENT SHALL TELETRONICS INTERNATIONAL, INC. BE LIABLE FOR ANY SPECIAL, INCIDENTAL OR CONSEQUENTIAL DAMAGES FOR BREACH OF THIS OR ANY OTHER WARRANTY, EXPRESSED OR IMPLIED, WHATSOEVER.

Some states do not allow the exclusion or limitation of special, incidental or consequential damages, so the above exclusion or limitation may not apply to you. This warranty gives you specific legal rights, and you may also have other rights that vary from state to state.

## RMA Policy

### Product Return Policy

It is important to us that all Teletronics' products are bought with full confidence. If you are not 100% satisfied with any product purchased from Teletronics you may receive a prompt replacement or refund, subject to the terms and conditions outlined below.

**IMPORTANT:** Before returning any item for credit or under warranty repair, you must obtain a Return Merchandise Authorization (RMA) number by filling out the RMA form. Products will not be accepted without an RMA number. All products being shipped to Teletronics for repair/refund/exchange must be freight prepaid (customer pays for shipping). For all under warranty repair/replacement, Teletronics standard warranty applies.

30-Day full refund or credit policy:

- I. Product was purchased from Teletronics no more than 30 day prior to the return request.
- II. All shipping charges associated with returned items are non-refundable.
- III. Products are returned in their original condition along with any associated packaging, accessories, mounting hardware and manuals. Any discrepancy could result in a delay or partial forfeiture of your credit.

Unfortunately Teletronics cannot issue credits for:

- I. Products not purchased from Teletronics directly. If you purchased from a reseller or distributor you must contact them directly for return instructions.
- II. Damaged items as a result of misuse, neglect, or improper environmental conditions.
- III. Products purchased direct from Teletronics more than 30 days prior to a product return request.

To return any product under 1 year warranty for repair/replacement, follow the RMA procedure.



**TELETRONICS**  
INTERNATIONAL® INC.

## TBC-800

### BANDWIDTH CONTROLLER



Item# 22-103  
800MHz CPU Desktop Model up to 50 Mbps

## Quick Product Guide

### Technical Specifications

<b>Standard Compliance:</b> IEE 802.3 10BaseT Ethernet IEE 802.3u 100BaseT Ethernet ANSI/IEEE 802.3 NWay auto-negotiation	<b>Power Requirement:</b> External Power Adapter Input: 100-240 VAC, 50/60 Hz, 1.0A Output: 5V, 2.5A	<b>Operating Temperature:</b> Temperature: 10-50 C Storage Temp: -20 to 70 C Humidity: Max. 95% Non Condensing
<b>Bandwidth Control:</b> Bandwidth Control by IP Default Download and Upload Rate Grouping and Group Bandwidth Setting QoS by IP/Protocol/Port	<b>LED Indicators:</b> One Power LED Four WAN Link/Activity LED One Status LED	<b>Mounting:</b> Desktop Wall Mounting
<b>Utilities:</b> Ping Utilities, Trace Route Tcpdump, NetPerf	<b>Security Firewall:</b> Admin Configuration VPN (IPSec/PPTP) Pass Through	<b>Dimension:</b> Size: 200 W x 215 L x 150 H Weight: 0.32 kg
<b>Rich Networking Function:</b> Various WAN Connections (Static IP/DHCP Client) DHCP Server SNMP Remote Syslog	<b>Management:</b> Web based Management Tool Command Line Interface HTTP/HTTPS/Telnet Admin. Restriction Password Control for Configuration Date and Time SNTP Web based Update/Backup/Restore	<b>Status:</b> Network Status System Log (Compact & Detail Mode)
		<b>Bandwidth Limiting:</b> IP Address, Group, Subnet, Port
		<b>Connection Limits:</b> Maximum 64 x 256 sessions

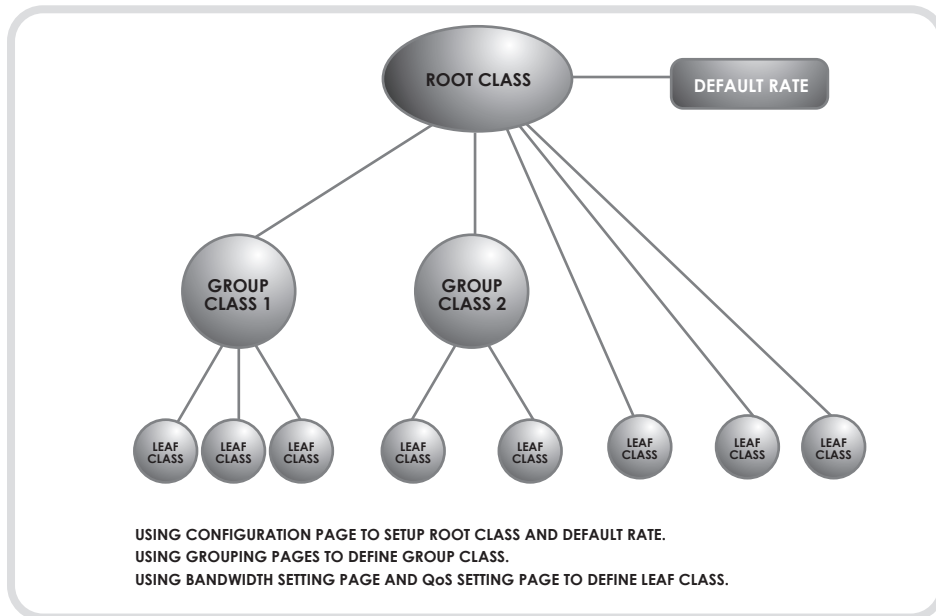
### Hardware Specifications

<b>CPU Speed:</b>	800MHz
<b>System Memory:</b>	1 x 168 pin DIMM max. up to 512MB/128MB SDRAM onboard
<b>Chipset:</b>	VIA VT8601T + VT82C686B
<b>Bios:</b>	Phoenix-Award BIOS with 2Mbit Flash
<b>SSD:</b>	CompactFlash TM Type II Socket (512 MB)
<b>Board Unique ID:</b>	Dallas DS2401 Controller
<b>Watchdog Timer:</b>	System Rest and NMI: 64 Levels, 0.5 - 8/5 - 80/50 - 800/100 - 1600 Seconds
<b>Ethernet Interface:</b>	4 Ports 10/100 Base T Ethernet with Auto-Sense Mode
<b>Battery:</b>	Lithium 3V/196 mAh
<b>Size/Weight:</b>	200mm W x 215mm L x 150mm H/ 0.32kg
<b>Temperature:</b>	0 - 60° C, Operation
<b>Operation Humidity:</b>	105 - 95% relative humidity, non-condensing

### Package List

1. TBC-800 CPU Unit (1)
2. 5 Volt Power Adapter
3. Serial Cable
4. Quick Product Guide

## Structure of Bandwidth Control



### 1: Basic Introduction

Operation Mode: Bridge Mode  
WAN Interface: LAN1  
LAN Interface: LAN2, LAN3, LAN4



### 2: Set-Up

#### Step 1. Hardware Installation

1. Set your computer's IP property to: IP address: 192.168.1.100 and Subnet Mask: 255.255.255.0
2. Use a Crossover Ethernet cable to connect the LAN1 port to your computer's Ethernet port
3. Connect power adapter to TBC-800

#### Step 2. Login to the Web-Base Management Interface

Default IP address: 192.168.1.124

To access the web control interface, open up a web browser and type in the default IP address in the URL



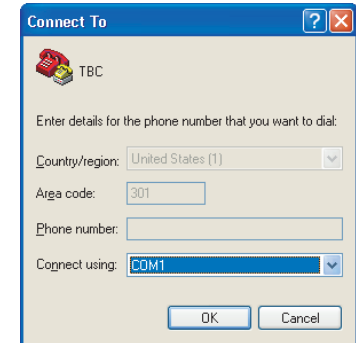
Username: admin  
Password: admin

### 3: Login to Console by Serial Port (Hyper Terminal)

1. Use the serial cable provided, connect the Console Port on the back of TBC to your computer's COM Port.



2. Open a hyper terminal window, select the connection by the COM1 port, and click "OK" button.



3. Set the COM port properties as following, then click "OK"

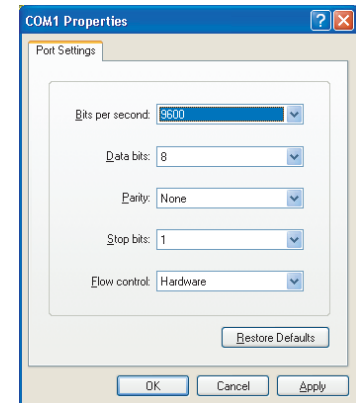
Bits per second: 9600

Data bits: 8

Parity: None

Stop bits: 1

Flow Control: Hardware



4. Press "Enter" and the hyper terminal will show the Login screen.  
Username: admin  
Password: admin

